



unesco

Man and the Biosphere
Programme

The 37th SESSION OF THE INTERNATIONAL COORDINATING COUNCIL OF THE MAN AND THE BIOSPHERE PROGRAMME

PARTICIPANT HANDBOOK

26-28 September 2025
Lin'an, Hangzhou, China



CONFERENCE OVERVIEW

SCHEDULE:

26-28 September 2025

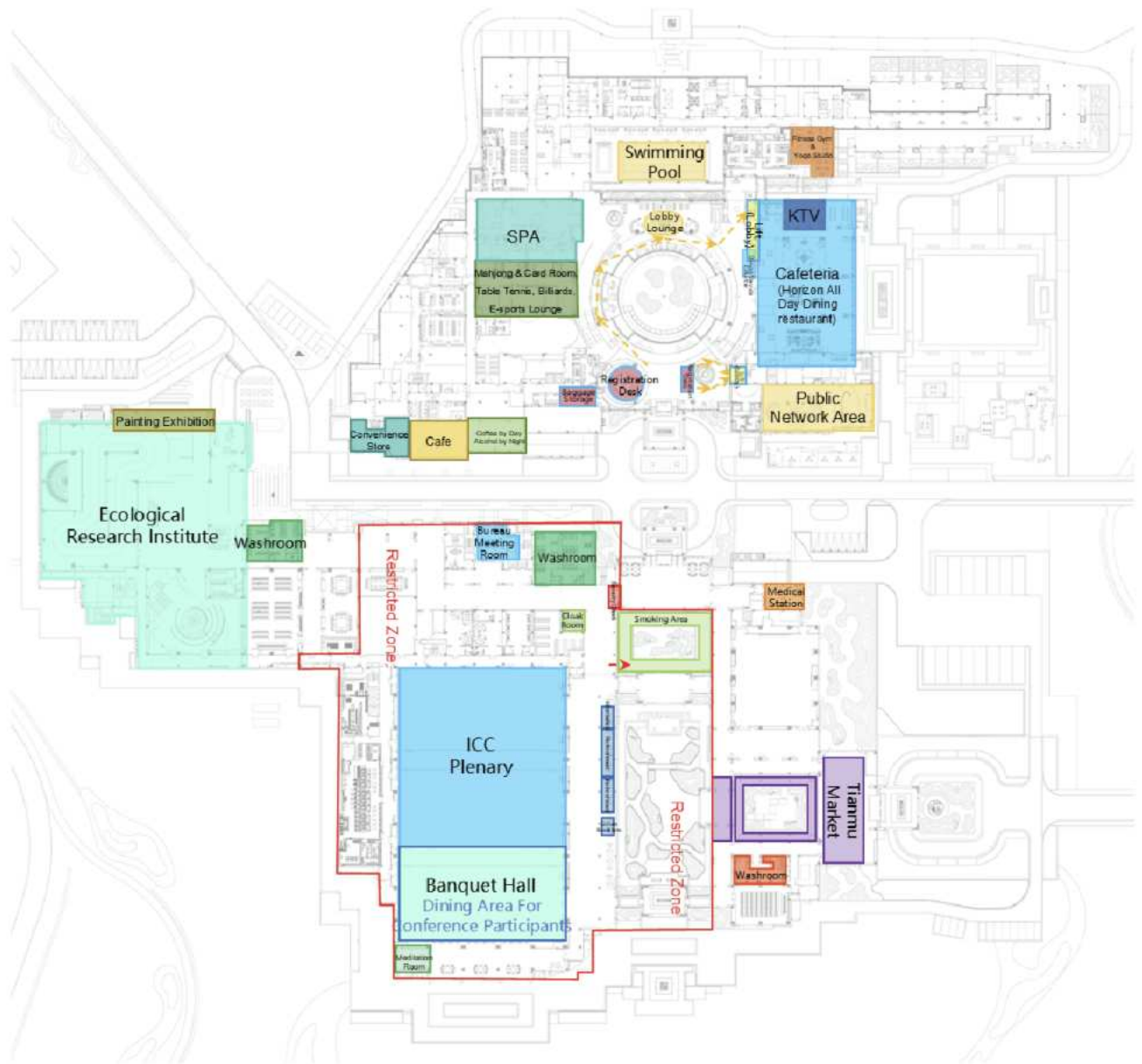
VENUE:

Shuhua Grand Ballroom, Tianmu Future Valley
Research Center





VENUE FLOOR PLAN





PROVISIONAL TIMETABLE

Time (Hangzhou UTC+8)	Friday 26 September
09:00 - 10:00	Registration
10:00 - 11:15	1.Opening remarks by Ms.Latifa Yaakoubi, Chair of the International Coordinating Council of the MAB programme (MAB-ICC)
	2.Opening remarks by -UNESCO Director-General or her representative, Ms. Lidia Arthur Brito, Assistant Director-General for Natural Sciences, UNESCO -Mr. Yaping Zhang, Chairman of China National Committee for the MAB Programme, Academician of the Chinese Academy of Sciences -Mr. Guozheng Yang, Secretary of the Lin'an District Committee, Hangzhou City
	3.Report of Ms.Latifa Yaakoubi, Chair of the MAB-ICC
	4.Adoption of the Agenda and Timetable
	5.Report of the Secretary of the MAB Programme
11:15 - 11:30	Coffee/Tea Break
11:30 - 13:00	6.MAB' s contributions to the Kunming-Montreal Global Biodiversity Framework
	7.The role of Youth in the MAB programme, including the work of the open-ended working group
13:00 - 15:00	Lunch
15:00 - 16:15	8.Digitization of MAB statutory processes and documents and UNESCO' s biodiversity portal
	9.MAB financial reporting
16:15 - 16:30	Coffee/Tea break
16:30 - 18:00	10.Proposal for a new thematic network: "People for Living Waters"
	11.MAB Young Scientists Awards including Prince Albert I Awards
	12.Michel Batisse Award
18:00 - 19:00	MAB Bureau meeting



PROVISIONAL TIMETABLE

Time (Hangzhou UTC+8)	Saturday 27 September
09:00 - 10:00	MAB Bureau meeting
10:00 - 11:15	13.Presentation, discussion and approval of the new MAB Hangzhou Strategic Action Plan
11:15 - 11:30	Coffee/Tea Break
11:30 - 13:00	14.Periodic review reports and follow-up information received since the 36th MAB-ICC
13:00 - 15:00	Lunch
15:00 - 16:15	15.Proposals for new biosphere reserves and extensions/modifications/renaming of biosphere reserves that form part of the World Network of Biosphere Reserves
16:15 - 16:30	Coffee/Tea break
16:30 - 18:00	16.Other matters
	17.Date and location of the 38th session of the MAB-ICC
	18.Adoption of the report
	19.Closure of the session
19:00, TBC	Reception

Time (Hangzhou UTC+8)	Sunday 28 September
08:00 - 12:00	Field visit



Overall Agenda

Date	Overall Agenda			
25 September	13:50 Depart from Hangzhou International Expo Center	15:00-16:00 Visit Wuyue Culture Museum	17:00-18:30 Check-in at Shu Hua Tianmu Mountain, Curio Collection by Hilton&Hotel Indigo Hangzhou Tianmushan	18:00-21:00 Dinner
26 September	9:00-18:00 Coucil Session 18:00-19:00 MAB Bureau Meeting Tea Breaks:11:15-11:30 & 16:15-16:30 Meals:Lunch 13:00-15:00&Dinner 18:00-20:00			
27 September	9:00-10:00 MAB Bureau Meeting 10:00-18:00 Coucil Session Tea Breaks:11:15-11:30&16:15-16:30 Meals:Lunch 13:00-15:00&Dinner 18:00-20:00			
Remarks: On 26-27 September, during breaks or the midday recess of the Coucil Session, participants may visit the Ecological Research Institute and Tianmu Market (both located within the venue).				
28 September	Field visit in Tianmushan-Qingliangfeng Biosphere Reserve and Yueliangqiao Village	Lunch (Light Meal)	28-29 September Leaving Hangzhou	



EXHIBITION

- **Tianmu Market**

Location: The southeastern area of Research Center,
Tianmu Future Valley

Exhibition Period: 25-28 September, 09:00-20:00



- **Painting Exhibition**

Location: 2F north corridor, Ecological Research Institute,
Tianmu Future Valley.

Exhibition Period: 25-28 September, 09:00-20:00





ARRIVAL IN HANGZHOU

(For 37th Session of the MAB-ICC who WILL NOT attending the 5th WCBR)

Cautions to Entry and Exit

Before entry, you will need to fill out a foreigner entry card. You can scan the code to pre-fill your information for faster clearance.



Arrival Transportation-Pick-up Service

(Please kindly inform us of your arrival details by email in advance to facilitate our support services)

Hangzhou Xiaoshan International Airport

Our staff will be at the exits for International/Hong Kong/Macao/Taiwan Arrivals in Terminal 4 (T4), and Domestic Arrivals in Terminal 4 (T4), and Domestic Arrivals in Terminal 3 (T3). If you have any requests such as currency exchange, internet access, payment assistance, or lost and found, our staff will take you to the airport service area. After completion, you will be escorted back to the parking lot for departure.

- ▶ **Service hours:** Pick-up services will be arranged on 25 September, 08:00-23:00.
- ▶ **Route:** From Hangzhou Xiaoshan International Airport (HGH) to Shu Hua Hotel Tianmu Mountain, Curio Collection by Hilton or Hotel Indigo Hangzhou Tianmushan.

Hangzhoudong (East) Railway Station

Our staff will be at the exit to escort you to the pick-up area.

- ▶ **Service hours:** Pick-up services will be arranged on 25 September, 08:00-23:00.
- ▶ **Route:** From Hangzhoudong (East) Railway Station to Shu Hua Hotel Tianmu Mountain, Curio Collection by Hilton or Hotel Indigo Hangzhou Tianmushan.



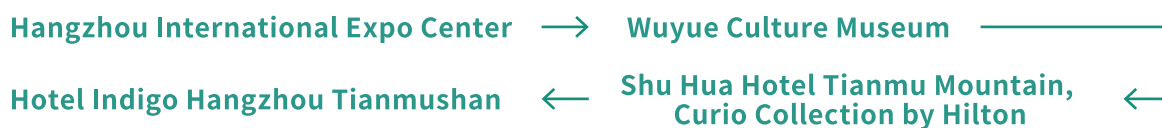
TRANSFER TO MAB-ICC VENUE

(For 37th Session of the MAB-ICC Who are Also Attending the 5th WCBR)

Please check out on the morning of September 25, and be sure to bring your luggage to the venue. Free and secure luggage storage services are available on both sides of the main security checkpoint at Hangzhou International Expo Center. Complimentary shuttle buses will depart at 13:50 on the same day, from Hangzhou International Expo Center to the MAB-ICC venue in Lin' an.

Transfer Route 1:

(Participants who have chosen to visit the Wuyue Culture Museum)



Departure Time: 25 September, 13:50

Boarding Location: Hangzhou International Expo Center

Transfer Route 2:

(Participants who did not choose to visit the Wuyue Culture Museum)



Departure Time: 25 September, 13:50

Boarding Location: Hangzhou International Expo Center

BADGE COLLECTION & RECOMMENDED HOTELS

Participants who have reserved recommended hotels may complete registration at the reception counter in the hotel lobby. Those who have not reserved accommodations at the recommended hotels may proceed to the reception counter of Shu Hua Hotel Tianmu Mountain, Curio Collection by Hilton.

● Reception Counter of Recommended Hotels

★ Shu Hua Hotel Tianmu Mountain, Curio Collection by Hilton

★ Hotel Indigo Hangzhou Tianmushan

Hotel Reception Check-in Hours: 24 hours

Opening Hours: 25 September, 10:00-21:00; 26 September, 09:00-10:00

● Recommended Hotel Distribution Map





SHUTTLE SERVICE DURING THE SESSION

- **Shu Hua Hotel Tianmu Mountain, Curio Collection by Hilton**
No.666, Yaojia, Qiandong Village, Yuqian Town, Lin'an District,
Hangzhou, Zhejiang Province, China
Distance to Venue:0km
- **Hotel Indigo Hangzhou Tianmushan**
No.66 Baihe Street, Tianmushan Town, Lin'an District,
Hangzhou, Zhejiang Province, China
Distance to Venue:4.3km

SHUTTLE SERVICE BETWEEN HOTELS&VENUE SHUTTLE BUS SCHEDULE DURING THE CONFERENCE SESSION

Date	Departure Hotel Indigo Hangzhou Tianmushan - Shu Hua Hotel Tianmu Mountain, Curio Collection by Hilton	Departure Shu Hua Hotel Tianmu Mountain, Curio Collec- tion by Hilton - Hotel Indigo Hangzhou Tian- mushan	Remarks
26 September	08:20	13:15	The shuttle service will be provided by buses, which will depart when full. Paid taxi services will also be available
	09:20	20:10	
	14:45	21:10	
27 September	08:20	13:15	
	09:20	20:10	
	14:45	/	
28 September	/	13:00	

Paid Taxi Service

Service Hours:

25-28 September(08:00am-02:00am(next day))

Important Reminder:

Taxi services can be arranged by the front desk, subject to a fee. A 30-minute advance reservation is required.



FOOD AND BEVERAGE

Reception

► **Time:** 27 September (Saturday), 2025, 18:30–20:00

► **Location:** Venue Banquet Hall

Meals

25 September Dining

Breakfast 06:30-10:00	Lunch 13:00-15:00	Dinner 18:00-21:00
/	/	Buffet (Respective Hotel Cafeteria)

26 September Dining

Breakfast 06:30-10:00	Lunch 13:00-15:00	Dinner 18:00-20:00
Buffet (Respective Hotel (Cafeteria))	Buffet (Venue Banquet Hall)	Buffet (Venue Banquet Hall)

27 September Dining

Breakfast 06:30-10:00	Lunch 13:00-15:00	Dinner 18:30-20:00
Buffet (Respective Hotel Cafeteria)	Buffet (Venue Banquet Hall)	Reception (Venue Banquet Hall)

28 September Dining

Breakfast 06:30-10:00	Lunch 12:00-14:00	Dinner 18:00-21:00
Buffet (Respective Hotel Cafeteria)	Self-serve light meal (Venue Banquet Hall)	Buffet (Respective Hotel Cafeteria)

Tea Break

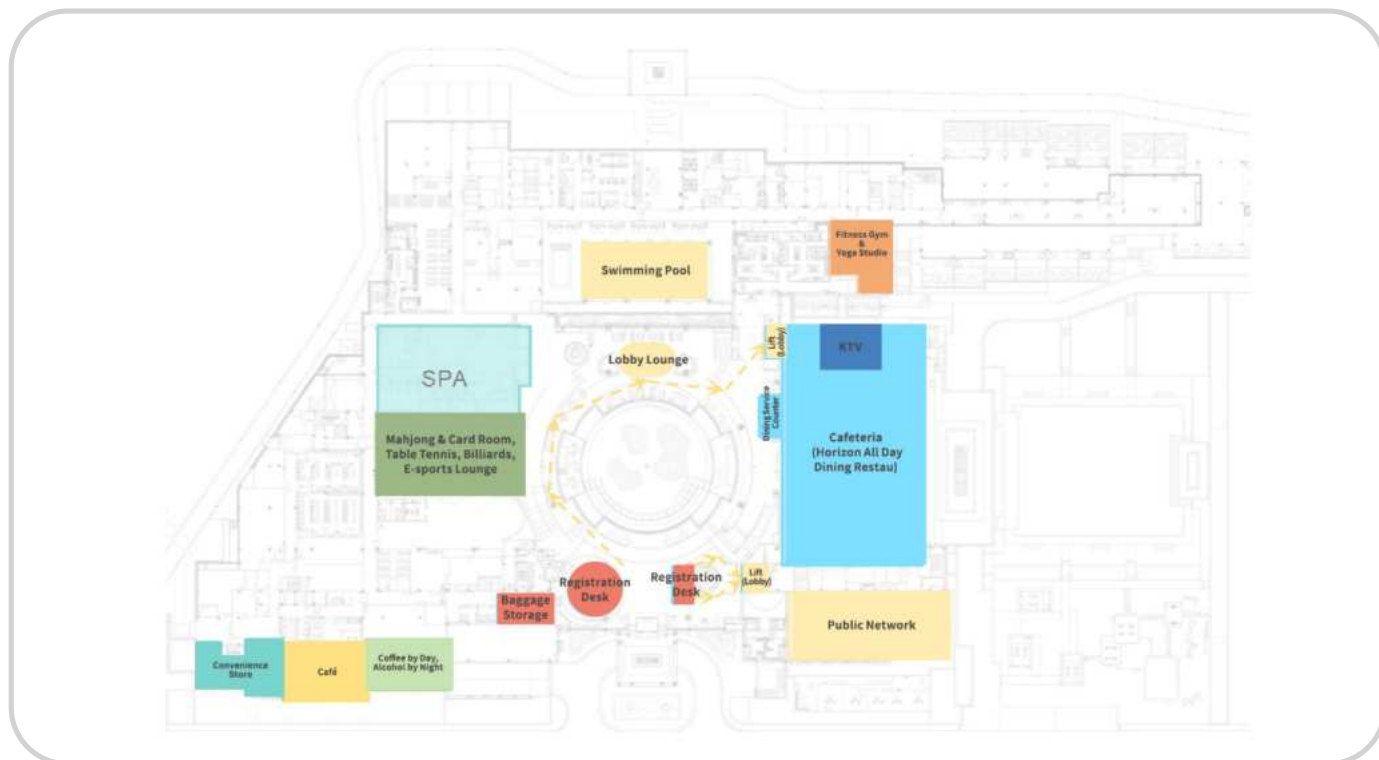
Complimentary tea breaks are available at the venue entrance during the conference.

► **Schedule:** 26-27 September, 11:15-11:30 & 16:15-16:30



OTHER SERVICE

► Functional Area Map of Shu Hua Hotel Tianmu Mountain, Curio Collection by Hilton



Lobby Lounge

Name of Restaurant: Fortune Foliage Lobby Bar

- **Opening Hours:** 09:00-23:00
- **Location:** 1F, Shu Hua Hotel Tianmu Mountain, Curio Collection by Hilton
- **Description:** Inspired by the ancient ginkgo trees of Tianmu Mountain, Fortune Foliage Lobby Bar harmonizes natural aesthetics to create a serene retreat. Its circular landscape design, complemented by soft lighting and floor-to-ceiling windows, allows sunlight to weave a dynamic play of light and shadow throughout the day. Here, guests may savor curated afternoon teas, a diverse selection of Chinese and Western teas, coffees, local Yunwu Tea, and savory delicacies. This space invites both social gatherings and moments of tranquil solitude.

Recreation Department

The Recreation Department includes: Fitness Gym, Yoga Studio, Swimming Pool, Jacuzzi, Mahjong/Cards Room, KTV Room, Table Tennis, Billiards, E-sports Lounge, and SPA. It is located on 1F of Building 2. Hotel guests enjoy complimentary access to Billiards and Table Tennis for 1 hour.

Complimentary Access for Hotel Guests with your room key:

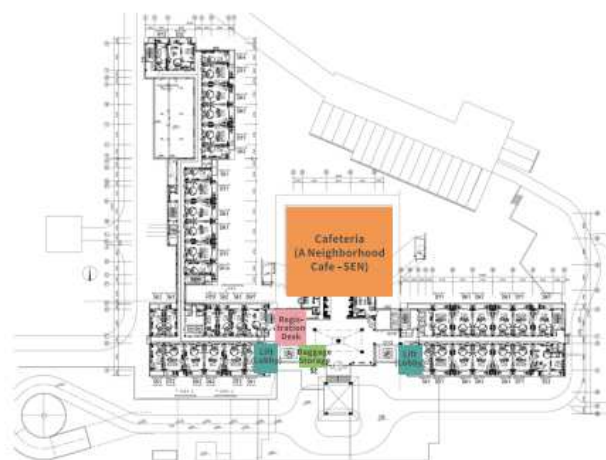
- **Fitness Gym:** Open 24 hours
- **Yoga Studio:** 06:00 - 22:00
- **Swimming Pool & Jacuzzi:** 08:00 - 22:00
Indoor Pool Specifications: Dimensions: 25m(L)*10m(W) * 1.2-1.4m(D)
Temperature: Maintained at 28°C; Jacuzzi Temperature: 39-45°C
- **Opening Hours:** 08:00-22:00 Daily

► Hotel Indigo Hangzhou Tianmushan

1F



2F



Restaurant & Bar

Name of Restaurant: A Neighborhood Cafe-SEN

(East-meets-West fusion cuisine, featuring an integrated bar and lobby lounge)

- **Location:** 2F of the hotel. From the main lobby, proceed straight ahead and turn left.
- **Breakfast:** 07:00-10:30
- **Lunch:** 11:30-14:30
- **Dinner:** 17:30-21:30
- **Afternoon Tea:** 14:30-16:00
- **Bar Service:** 14:30-23:00

Hotel Amenities

Indoor Pool:

Dimensions: 25m(L)*8m(W)*1.2m(D) Temperature: Maintained at 28°C

- **Location:** 1F
- **Opening Hours:** 09:00-21:00

Fitness Gym:

- **Location:** 1F
- **Opening Hours:** Open 24 hours (With your room key)



FIELD VISIT

The Field Visit is only available for participants who have registered. As previously communicated, MAB-ICC participants cannot join the Congress site visits on 25, 26 September, as separate visits will be arranged for you.

● Wuyue Culture Museum

- ▶ **Schedule:**
25 September, 15:00-16:00
- ▶ **Departure Time:**
25 September, 13:50
- ▶ **Departure Location:**
2F, Hangzhou International Expo Center

The Wuyue Culture Museum is the first thematic museum dedicated to the history of the Wuyue Kingdom, established based on the rich archaeological sites and cultural relics of the Wuyue Kingdom in Lin'an. It also serves as the museum for the site of the capital city, Yijincheng. With an exhibition area of 6,500 square meters, it displays 350 pieces (sets) of cultural relics, including 150 first-class relics (sets), accounting for 80% of the total exhibits. The exhibition theme, "Millennium of Wuyue—Southeastern Paradise During the Five Dynasties and Ten Kingdoms Period," is structured across three levels: the first level explores the historical and cultural value and influence of the Wuyue Kingdom, while the second and third levels showcase its precious artifacts and the continuity of its civilization.





FIELD VISIT

● The Tianmushan-Qingliangfeng Biosphere Reserve & Yueliangqiao Village

► **Schedule:**

28 September, 08:00-12:00

► **Departure Time:**

28 September, 08:00

► **Departure Location:**

Shu Hua Hotel Tianmu Mountain, Curio Collection by Hilton & Hotel Indigo Hangzhou Tianmushan (Participants staying at hotels other than the official recommended hotels please board at Shu Hua Hotel Tianmu Mountain, Curio Collection by Hilton)

► **Friendly Reminder:**

It has been rainy recently in the Tianmushan-Qingliangfeng Biosphere Reserve; please bring rain gear. There are many steps on the mountain; comfortable clothing and shoes are recommended.

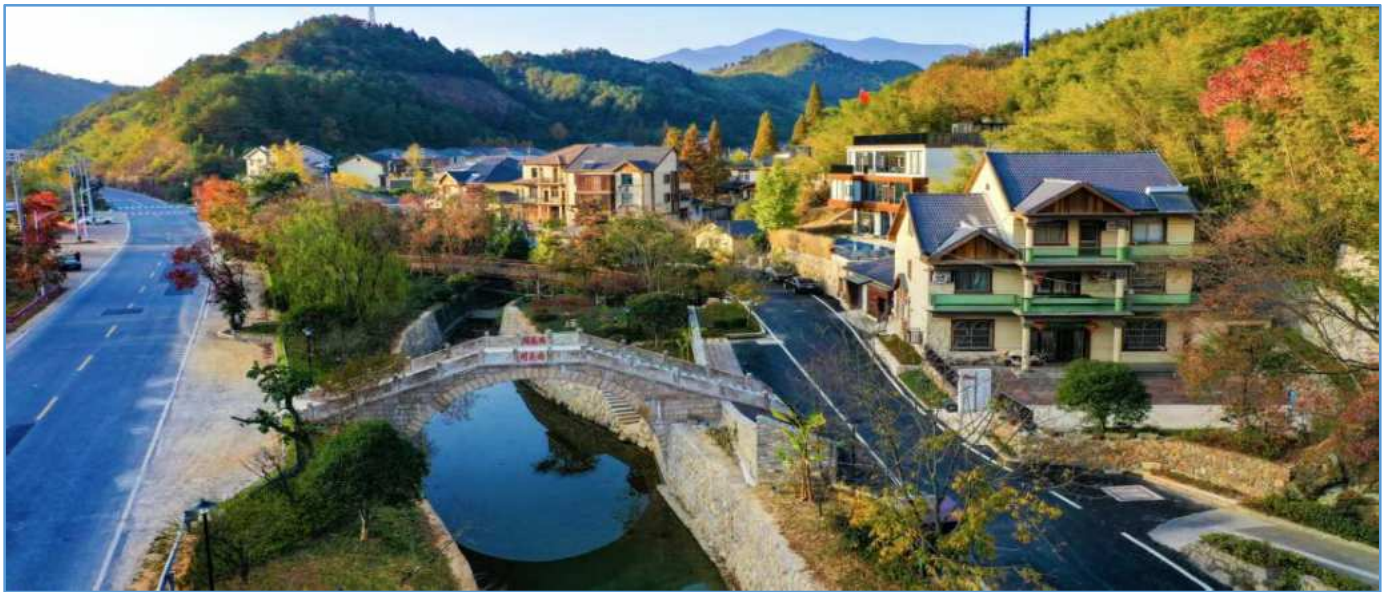
The Tianmushan-Qingliangfeng Biosphere Reserve In 1996, Tianmushan was designated as a World Biosphere Reserve by UNESCO. In 2024, through an expansion that integrated it with Zhejiang Qingliangfeng National Nature Reserve, it formed the present-day Tianmushan-Qingliangfeng Biosphere Reserve. This reserve boasts remarkable biodiversity, documenting 2,461 species of vascular plants—including rare trees such as the *Parrotia subaequalis* and the *Taxus wallichiana* var. *mairei*—and providing habitat for 374 species of vertebrates. Species such as the Black Muntjac, Chinese Pangolin, and Anji Salamander thrive here, collectively illustrating a moving chapter of harmonious coexistence between humans and nature.





FIELD VISIT

Yueliangqiao Village The indigenous people of Yueliangqiao Village, leveraging their natural resource endowment, have appropriately developed green industries including homestay tourism and eco-agriculture based on local conditions. This has enabled the village to transition from "living off the mountains" to an integrated model of agricultural, cultural, and tourism development. By successfully converting the ecological and resource advantages of the nature reserve into economic benefits for the people, they have achieved a prosperous and sustainable transformation.





Hotel—Airport, Railway Station Shuttle Timetable

Service Hours:

28 September	08:00-20:00
29 September	07:00-16:00

Hangzhou Xiaoshan International Airport Shuttle Bus Schedule

Date	28 September		29 September		Remarks
Hotels	Hotel Indigo Hangzhou Tianmushan	Shu Hua Tianmu Mountain, Curio Collection by Hilton	Hotel Indigo Hangzhou Tianmushan	Shu Hua Tianmu Mountain, Curio Collection by Hilton	Estimated Duration: 2 hours
Departure	08:00	08:15	07:00	07:15	
	11:00	11:15	10:00	10:15	
	14:00	14:15	13:00	13:15	
	17:00	17:15	16:00	16:15	
	20:00	20:15	/	/	

Hangzhoudong (East) Railway Station Shuttle Bus Schedule

Date	28 September		29 September		Remarks
Hotels	Hotel Indigo Hangzhou Tianmushan	Shu Hua Tianmu Mountain, Curio Collection by Hilton	Hotel Indigo Hangzhou Tianmushan	Shu Hua Tianmu Mountain, Curio Collection by Hilton	Estimated Duration: 1 hours 40 minutes
Departure	08:00	08:15	07:00	07:15	
	11:00	11:15	10:00	10:15	
	14:00	14:15	13:00	13:15	
	17:00	17:15	16:00	16:15	
	20:00	20:15	/	/	



SERVICES AND REMINDERS

Joins Our Green initiatives

- **Paperless Operations:** No printed documents will be provided during the conference; all documents are available in electronic format.
- **Zero-Waste:** Clearly marked, aesthetically integrated waste sorting stations and a badge collection point are located throughout the venue. On-site volunteer will assist with sorting and answer any questions to ensure all materials are disposed of properly.
- **Sustainable Catering:** The conference will not provide any single-use items, including plastic meal boxes or bottled water. All tableware and cutlery are either biodegradable or reusable. All participants are kindly requested to carry the reusable cup provided by the conference. Water refill stations are conveniently located throughout the venue, in lounges, and at field trip sites.
- **Green Construction & Materials:** Modular and reusable structures and signage have been utilized for all exhibition booths, with items made from renewable materials. After the event, all usable materials will be donated to extend their lifecycle and prevent waste.
- **Carbon Offset:** The total carbon emissions generated by the conference will be calculated and neutralized through investments in carbon offset projects (e.g., green electricity and renewable energy initiatives), thereby achieving a neutral carbon footprint for the event.

Accessibility Services

- **Seamless Guidance:** Clear and consistent signage will guide you continuously from arrival at airport and train station drop-offs to all key areas including hotels, conference venues, lounges, dining spaces, and restrooms.
- **Accessible Seating:** The main venue and breakout rooms offer accessible services and reserved wheelchair seating, including wheelchair rental options.

Medical Services

Medical stations and staffs are available at the recommended hotels, field visit sites and venue for emergency incidents.

Public Emergency Contacts

- **Police:** 110
- **Ambulance:** 120
- **Traffic Accident:** 122
- **CHINA IMMIGRATION SERVICE HOTLINE:** +86 12367

Help & Support

If you encounter any issues, please seek assistance from staff members or volunteers at the venue or in the recommended hotels, and they will be pleased to assist you.

AI Hangzhou is a pioneering, all-in-one platform for international visitors, launched by the Hangzhou government. It integrates three core sections: City Services, City Information, and City Guidance.

AI Hangzhou

爱杭州



Immigration
Service
移民服务



Medical
Service
医疗服务



eSIM
电子SIM卡



Red Bicycle
共享单车



Residence
Service
居住服务



Hangzhou Pass
杭州通票



Museum
博物馆



More Services
更多服务

How to use

Option 1: Scan the QR code below with Alipay
to enter "AI Hangzhou"

打开支付宝扫描下方二维码，直接进入 "AI Hangzhou"



Option 2: Search "AI Hangzhou" in Alipay and
select the "AI Hangzhou" mini-app (City Services)

上支付宝搜索 "AI Hangzhou" ,
选择进入 "AI Hangzhou" (City Services)

For more information and the latest updates, please refer to
<https://www.biosphere2025.org.cn>